

# Ronald Commons

A Collaboration in Services and Housing



# Ronald Commons Partners

---



**Pastor Paula  
McCutcheon**



**Janet Pope**  
Executive Director



**Meghan Altimore**  
Vice President of  
Community Service

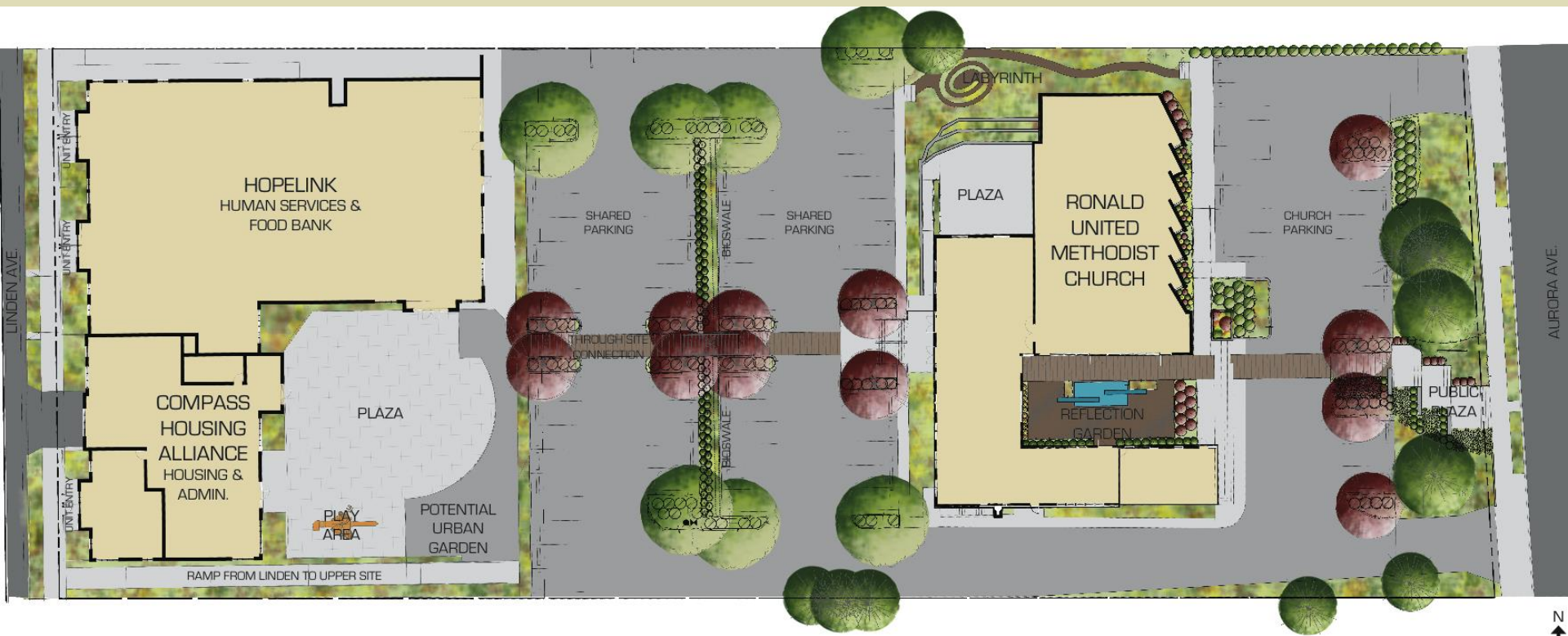
# Ronald Commons

---

- **Compass:** 60 Units of Affordable Housing
- **Hopelink:** 12,000 SFT Integrated Service Center
- **RUMC:** Remodeled Church facilities ready for community partnerships



# RONALD COMMONS



# Ronald Commons

---



# Ronald Commons

---



- **Creating the Vision**
- **Building the Will**
- **Securing the Partners**
- **Advocacy**
- **A Shared Covenant**

# Ronald Commons

---



- **Building the Partnership**
- **Putting the Deal Together**
- **Condos!**
- **Lease-Up**

# Ronald Commons

---

**hopelink**

- **Opening Day!**
- **Partner Committee**
- **Operational Agreements and Opportunities**
- **Community Engagement**



# RONALD COMMONS

---



# RONALD COMMONS



# Ronald Commons

---

## A Call To Action



# Ronald Commons

---

# Questions